



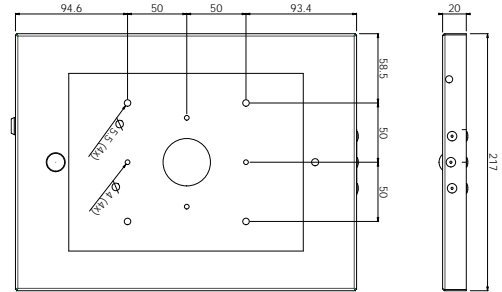
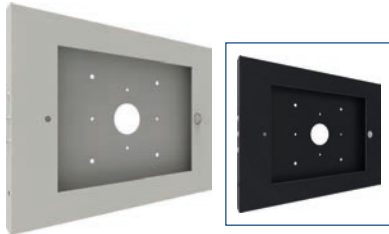
We've got you covered!

One time you just want to cover up your flat panel, protect it the other time. If you want your flat panel to blend in nicely in the interior, you are looking for a cover. If you want to install a flat panel outdoors you are looking for 24/7 protection from wheather, vandalism and theft.

We supply covers, housings and kiosks for any purpose and any size.

IPAD STANDS & HOUSINGS

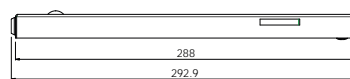
For indoor use



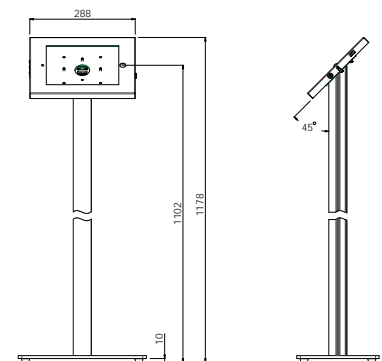
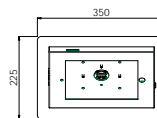
LOCKABLE WALL MOUNTED IPAD HOUSING

Suitable for iPad 2/3/4, AIR 1/2 and iPad Pro 9.7 inch.

	Colour	<input type="radio"/> <input checked="" type="radio"/>
	Max. load	3 kg
	Position	Landscape & Portrait



Article code	Colour
142.0120	White
142.0125	Black



IPAD STAND 1100 MM INCL. LOCKABLE HOUSING

Suitable for iPad 2/3/4, AIR 1/2 and iPad Pro 9.7 inch.

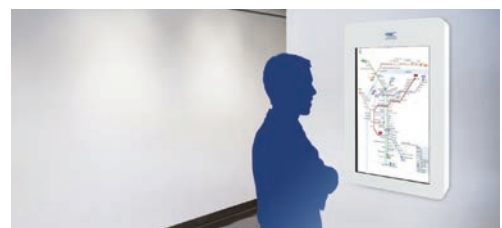
	Colour	<input type="radio"/> <input checked="" type="radio"/>
	Max. load	10 kg
	Position	Landscape & Portrait

Article code	Colour
142.0110	White
142.0115	Black



FLAT PANEL COVER MAX. 52 INCH

No more boring monitor bezels or visible cabling: cover it all up with this elegant flat panel cover. With its round corners it takes all the sharp edges off and it lends itself perfectly for branding.



	Colour	<input type="radio"/>
	Max. load	50 kg
	Position	Landscape & Portrait
	Required	Wall mount, see from page 9
	Note	Other colours on request

Article code	Inch range
092.3100	36 - 37 inch
092.3200	40 - 42 inch
092.3300	46 - 47 inch
092.3400	50 - 52 inch

HOUSINGS

For indoor use



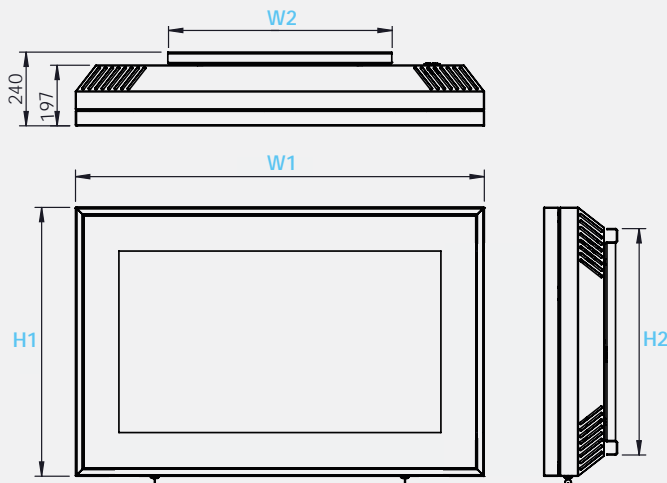
INDOOR HOUSINGS 092.1500 SERIES

Fitted with a hinged door with toughened safety glass for extra clarity.

	Colour	<input type="radio"/>
	Position	Landscape & Portrait
	VESA	Multi VESA
	Other info	Wall bracket included Other colours on request

Note: carefully consider the maximum admissible monitor dimensions and VESA center offset in determining the required model.

		Max. monitor dimensions in mm			Housing dimensions in mm			Bracket dimensions in mm		
Art. code	Screen size	W	H	D	W1	H1	D	W2	H2	D
FLAT PANEL INDOOR HOUSINGS, MAX. 700CD										
092.1500.1	46 inch - 49 inch	1118	713	95	1330	875	197	728	736	43
092.1500.2	50 inch - 55 inch	1243	768	95	1455	930	197	791	786	43
092.1500.3	56 inch - 65 inch	1468	903	95	1680	1065	197	926	926	43
092.1500.4	66 inch - 75 inch	1678	1018	95	1890	1180	197	1041	1064	43



VESA center offset

--	--

VESA	Max. VESA center offset
600 x 600	13 mm
400 x 400	113 mm

HOUSINGS

For outdoor use - flat panels up to 700 cd



IP55 OUTDOOR HOUSINGS 092.1600 SERIES

With hinged door with toughened safety glass, active ventilation, thermostatically controlled heating and a filter.

	Colour	<input type="radio"/>
	Position	Landscape & Portrait
	VESA	Multi VESA
	Other info	Wall bracket included Other colours on request

Note: carefully consider the maximum admissible monitor dimensions and VESA center offset in determining the required model.

		Max. monitor dimensions in mm			Housing dimensions in mm			Bracket dimensions in mm		
Art. code	Screen size	W	H	D	W1	H1	D	W2	H2	D
FLAT PANEL OUTDOOR HOUSINGS, MAX. 700CD										
092.1600.1	46 inch - 49 inch	1118	713	95	1330	875	197	728	736	43
092.1600.2	50 inch - 55 inch	1243	768	95	1455	930	197	791	786	43
092.1600.3	56 inch - 65 inch	1468	903	95	1680	1065	197	926	926	43
092.1600.4	66 inch - 75 inch	1678	1018	95	1890	1180	197	1041	1064	43

Accessories & Options

Article code	Description
092.1605.1 ~ 092.1605.4	UV foil for for 092.1600 & 1700 outdoor series
092.1620.1 ~ 092.1620.4	Layered instead of toughened glass for 092.1600 & 1700 series
092.1625.1.01 ~ 092.1625.4.01	Layered and toughened glass for 092.1600 & 1700 series
092.1630.1 ~ 092.1630.4	Digital- instead of frame printing for 092.1500 & 1600 & 1700 housings Required with i.e. IR control (an opening for the receiver eye will be made)
092.1705	Airconditioning for 092.1600 & 1700 outdoor series
092.1710	Hygrometer for 092.1600 & 1700 outdoor series

HOUSINGS

For outdoor use - flat panels up to 2500 cd



IP55 OUTDOOR HOUSINGS 092.1700 SERIES

With hinged door with toughened safety glass, active ventilation, thermostatically controlled heating and a filter.

	Colour	●
	Position	Landscape & Portrait
	VESA	Multi VESA
	Other info	Wall bracket included Other colours on request

		Max. monitor dimensions in mm			Housing dimensions in mm			Bracket dimensions in mm		
Art. code	Screen size	W	H	D	W1	H1	D	W2	H2	D
HIGH NIT FLAT PANEL OUTDOOR HOUSINGS, MAX. 2500CD										
092.1700.1	46 inch - 49 inch	<p>Please note following: Because of the many types of high nit monitors and the diversity of their ventilations positions it appeared not opportune to develop a universal housing. All models in these series will therefore be custom manufactured upon order; please mention the brand and type of your monitor.</p> <p>In case your monitor has deviant characteristics, extra drawing costs of maximum 4 hours could apply in addition to the standard price. Please ask the SmartMetals Sales Team for an offer beforehand.</p>								
092.1700.2	50 inch - 55 inch									
092.1700.3	56 inch - 65 inch									
092.1700.4	66 inch - 75 inch									

Accessories & Options

Article code	Description
092.1605.1 ~ 092.1605.4	UV foil for for 092.1600 & 1700 outdoor series
092.1620.1 ~ 092.1620.4	Layered instead of toughened glass for 092.1600 & 1700 series
092.1625.1.01 ~ 092.1625.4.01	Layered and toughened glass for 092.1600 & 1700 series
092.1630.1 ~ 092.1630.4	Digital- instead of frame printing for 092.1500 & 1600 & 1700 housings Required with i.e. IR control (an opening for the receiver eye will be made)
092.1705	Airconditioning for 092.1600 & 1700 outdoor series
092.1710	Hygrometer for 092.1600 & 1700 outdoor series

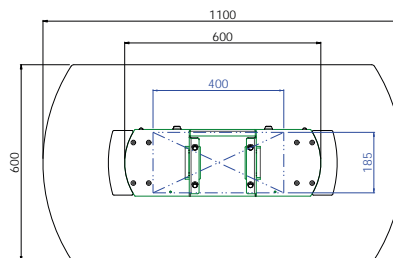
TOUCHTABLE

For indoor use

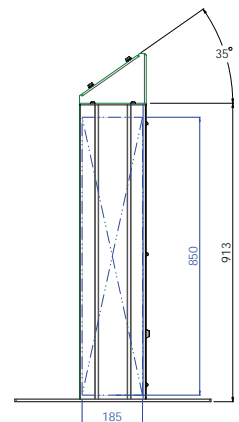
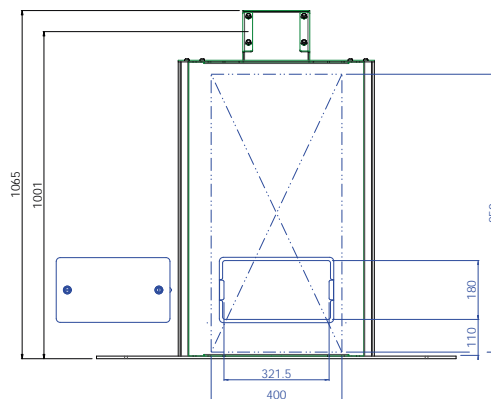
POS/POI STATIONS

Whether you are aiming for more brand awareness or would like to improve customer experience, our TouchTable, in combination with a touch screen, is just the solution you would benefit from in a Point of Information or Point of Sale.

This solid but elegant solution holds your flat panel under a fixed angle of 35° and has ample storage space for your media player or other peripherals which are easily accessible through the rear lockable hatch.



Dimensions in blue indicate the maximum available space for peripherals.



	Colour	<ul style="list-style-type: none"> - White body - Dark-grey base and top plate and mounting head - Aluminium sides
	Max. load	90 kg (screen + mount)
	Position	Landscape
	Required	Screen mount (052.1000, 052.2000 or 052.6000), see from page 9
	Notes	<ul style="list-style-type: none"> - Make sure your flat panel is suitable for positioning under a fixed 35° angle - Other colours and branding on request

Article code	Description
132.1000	TouchTable for flat screens (supplied excl. mount), max. load 90 kg

KIOSKS

For indoor use

Our SmartKiosk was designed for Digital Signage and informational purposes in public areas.

The kiosk is fitted with a universal mounting bracket which is adjustable in depth and height. Within the body of the kiosk there is room to store your media player or other peripherals which are

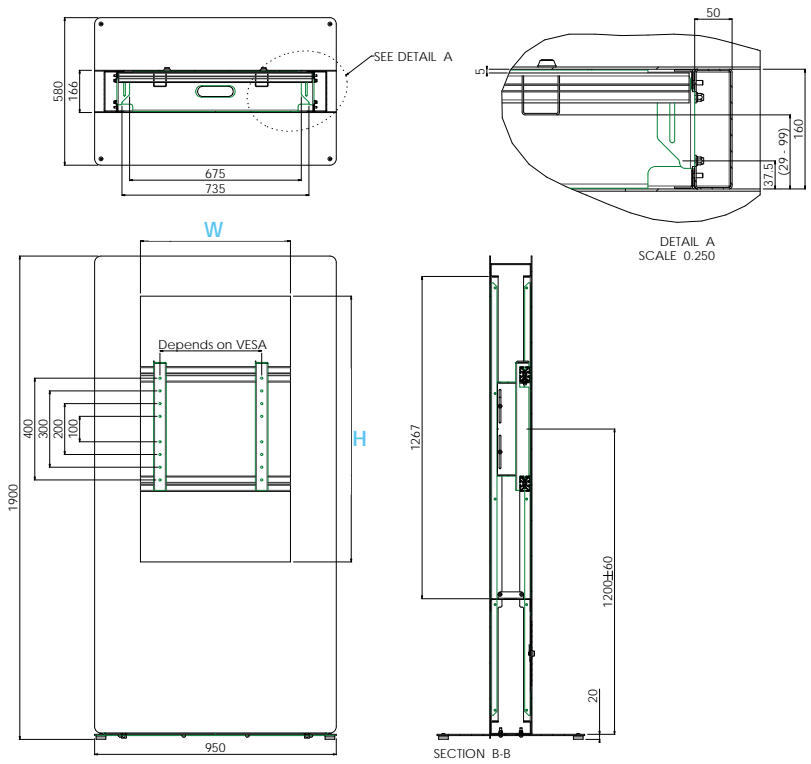
easily accessible via a lockable service hatch in the back.

The standard colour of the kiosk is RAL 9006 silvergrey but can be supplied in other RAL colours as well.



Customization options

- logo placement
- full wrapping of the kiosk
- back-to-back kiosk
- window of toughened glass
- kiosk on wheels
- UV foil



	Colour	
	Max. load	40 kg
	Max. inch	65
	Position	Portrait
	Other info	Your peripherals can be stored within the SmartKiosk

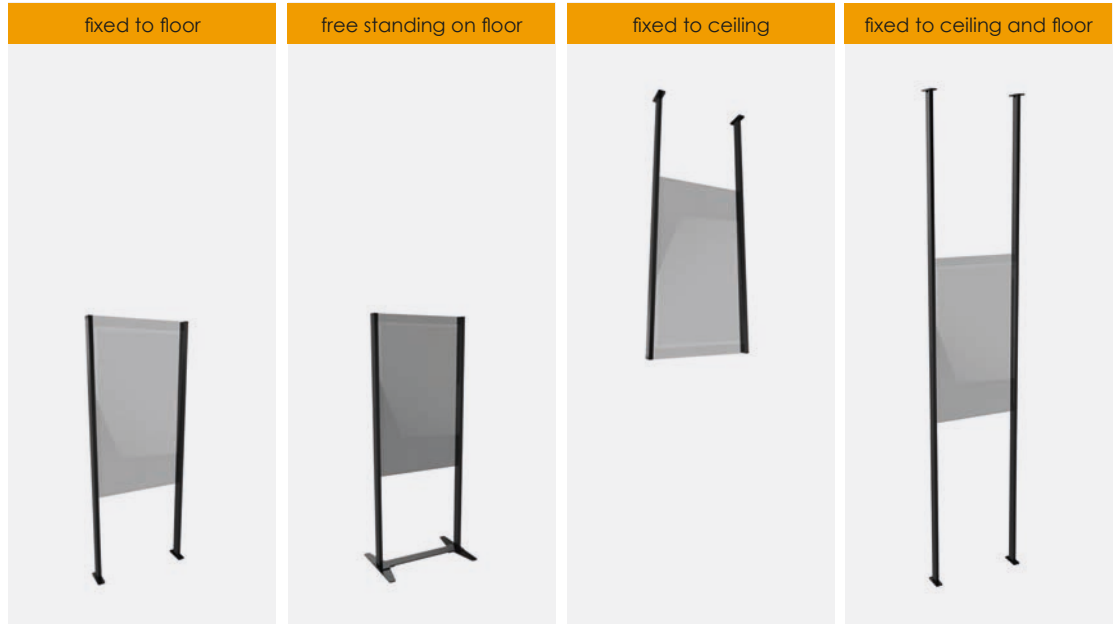
Article code	Inch range	Recess width (W)	Recess height (H)
102.1040	40 inch	To be determined: depends on the clear width of your monitor, specifications required upon order	
102.1042	42 inch		
102.1046	46 inch		
102.1047	47 inch		
102.1048	48 inch		
102.1050	50 inch		
102.1055	55 inch		
102.1060	60 inch		
102.1065	65 inch		

Looking
for more
customized
solutions?

Check the
**Digital
Signage**
chapter
(from page
130) for
inspiration.

BRAND RELATED SOLUTIONS

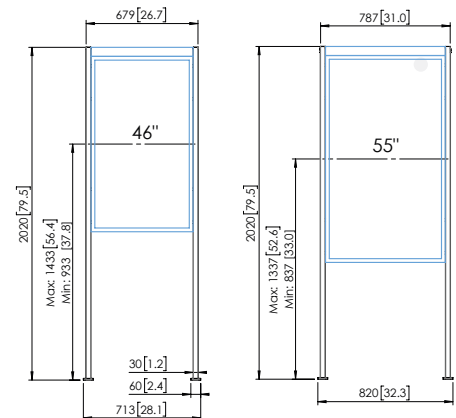
Samsung OMN-D mounting



MULTIPLE PURPOSE MOUNTING SOLUTION

The double-sided Samsung OMN-D display is an innovative product that deserves an elegant and smart mounting solution. The 102.2010 mounting system is designed in such a way that it can be used for ceiling mounting, floor mounting and if you combine two you also create a floor to ceiling mounting. If drilling in the floor is not an option, combine this solution with the optionally available base plate.

This Samsung mounting solution is easy to install and has an integrated cable management system. SmartMetals designed the product in such a way that it is a perfect addition to the unique Samsung OMN-D display.



Accessories



BASE PLATES

For a freestanding solution, when drilling in the floor is not an option.

Colour	●
Max. inch	46 and 55 inch
Position	Portrait

Article code	Description
102.2010	Mount for floor or ceiling Samsung OMN-D Series

Article code	Description
102.2015	For OMN-D 46 inch
102.2020	For OMN-D 55 inch



Powerful communication

To optimize powerful communication in shop windows SmartMetals developed a mounting solution for Samsung OMN-D Series dual sided display, both for 46 inch and 55 inch displays. Whether you need a floor mounted solution (fixed and

freestanding), a ceiling mounted solution or a floor-to-ceiling mounted solution, you can create any configuration with just 3 components and installation is clear and simple.